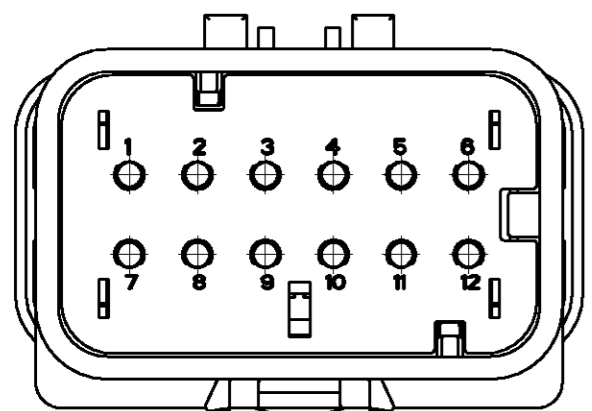
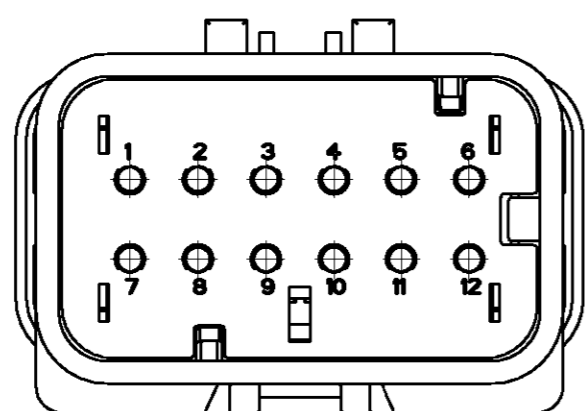


THIS DRAWING IS UNPUBLISHED. RELEASED FOR PUBLICATION
 BY TYCO ELECTRONICS CORPORATION. ALL RIGHTS RESERVED.

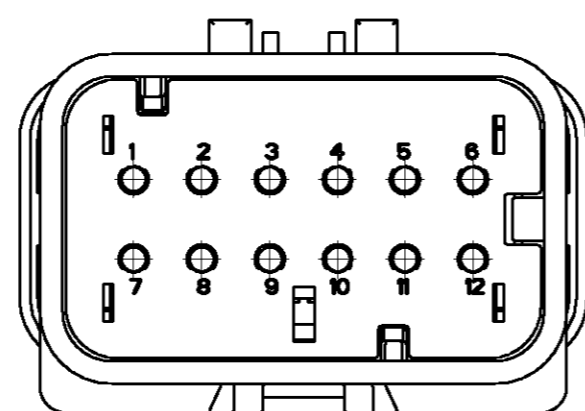
LOC	DIST	REVISIONS					
		P	LTR	DESCRIPTION	DATE	DWN	APVD
GE	00		A	REV PER EC OK40-0130-04	27APR2004	WH	JP
			B	REV PER EC OK40-0340-04	27SEP2004	WH	JP
			C	REV PER ECR-05-000278	22FEB2005	WH	RS



776438-2
SCALE 2:1

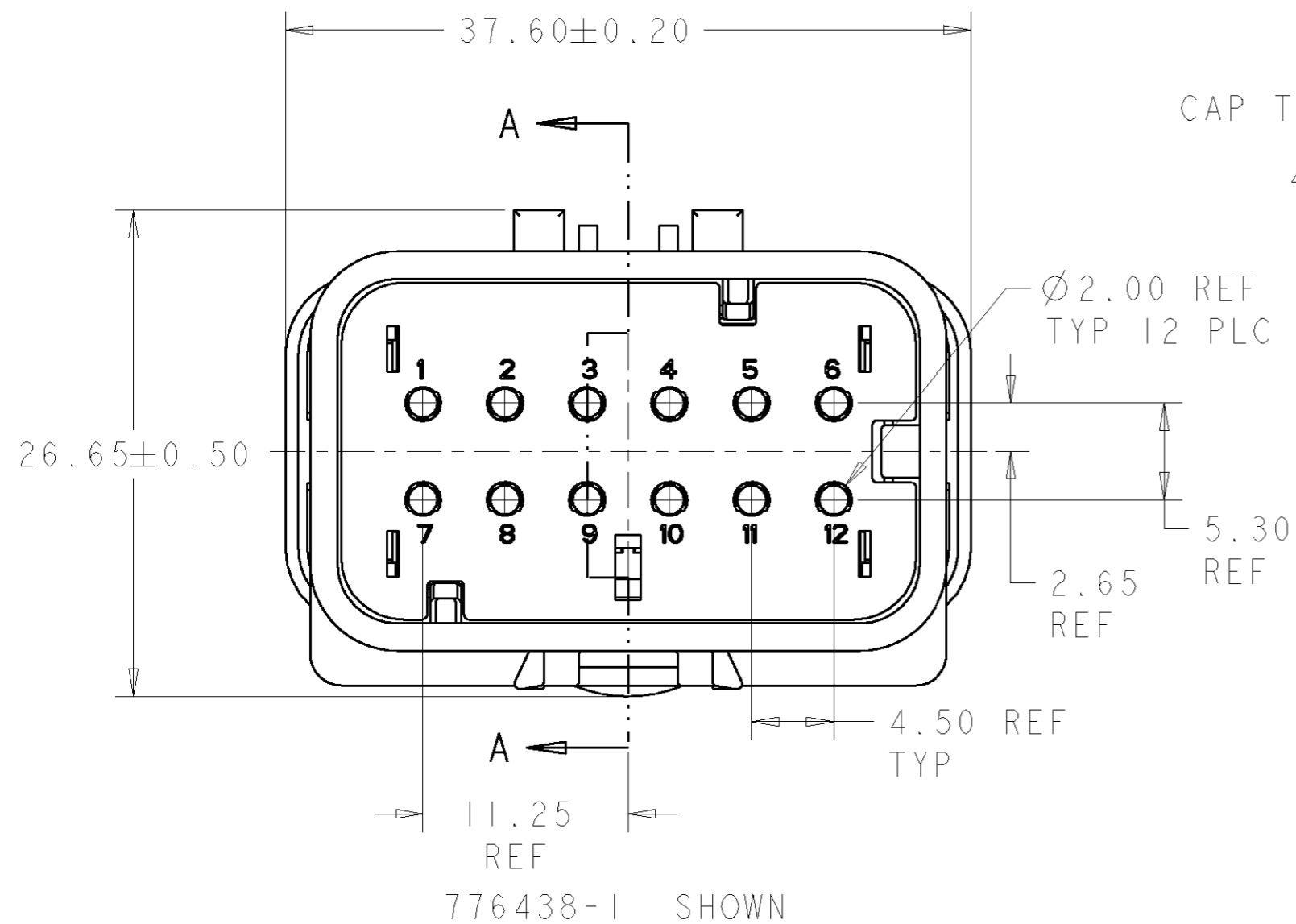


776438-3
SCALE 2:1

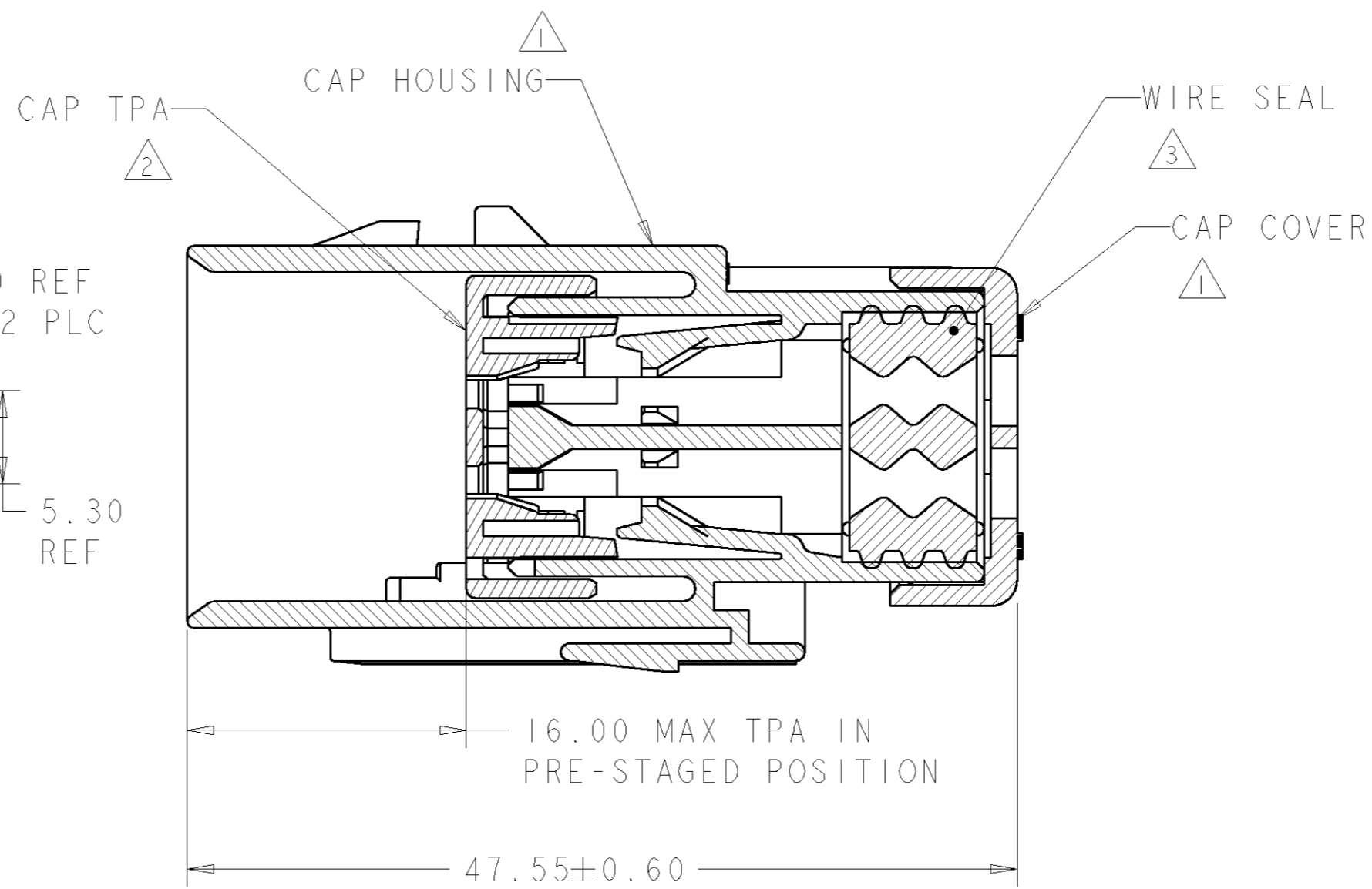


776438-4
SCALE 2:1

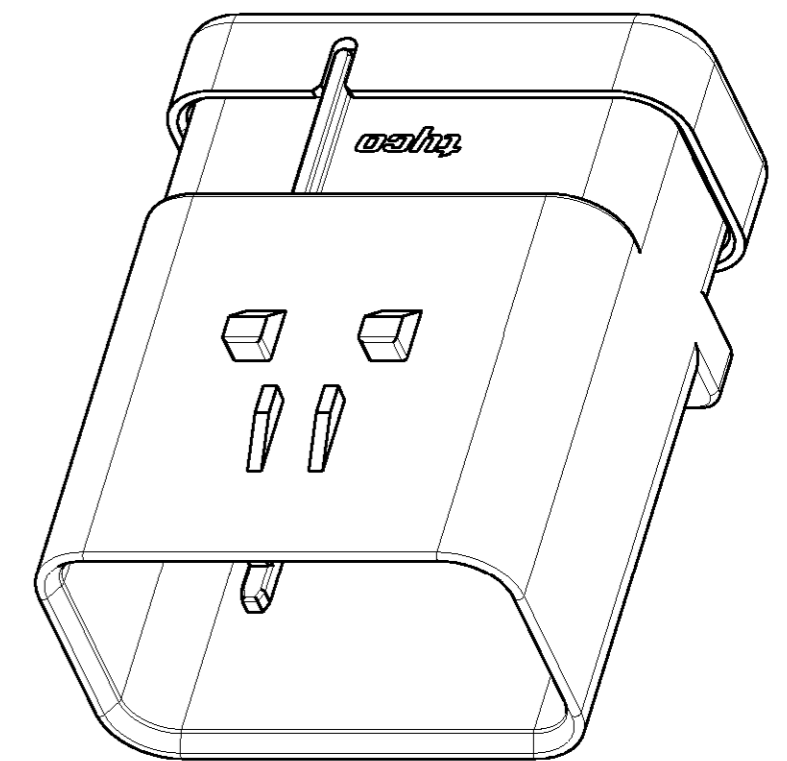
- ① MATERIAL: 15% GLASS FILLED THERMOPLASTIC
COLOR: BLACK
- ② MATERIAL: 15% GLASS FILLED THERMOPLASTIC
COLOR: (SEE TABLE)
- ③ MATERIAL: SILICONE
COLOR: YELLOW



776438-1 SHOWN



SECTION A-A



SCALE 2:1

GREEN	776438-4
YELLOW	776438-3
GRAY	776438-2
RED	776438-1
TPA COLOR	PART NUMBER

THIS AMP PROPRIETARY INFORMATION IS CONFIDENTIAL AND IS DISCLOSED TO YOU ON CONDITION THAT NO FURTHER DISCLOSURE IS MADE BY YOU TO ANYONE OTHER THAN AMP PERSONNEL WITHOUT WRITTEN AUTHORIZATION FROM AMP INCORPORATED, HARRISBURG, PA.

THIS DRAWING IS A CONTROLLED DOCUMENT FOR TYCO ELECTRONICS CORPORATION IT IS SUBJECT TO CHANGE AND THE CONTROLLING ENGINEERING ORGANIZATION SHOULD BE CONTACTED FOR THE LATEST REVISION.		DWN AJ GRAFF 06DEC99	AMP Incorporated Harrisburg, PA 17105-3608	
DIMENSIONS: mm		CHK R. GREINER 03JAN02	NAME CAP ASSEMBLY, 12 POSITION, DUAL ROW, AMPSEAL 16	
TOLERANCES UNLESS OTHERWISE SPECIFIED: 0 PLC ± 1 PLC ± 2 PLC ± 3 PLC ± 4 PLC ± ANGLES ± FINISH		APVD M. TRULLI 03JAN02	SIZE A2	
MATERIAL		PRODUCT SPEC -	CAGE CODE 00779	DRAWING NO 776438
		APPLICATION SPEC 114-13065	RESTRICTED TO -	REV C
		WEIGHT -	SCALE 2:1	SHEET 1 OF 1
		CUSTOMER DRAWING		